

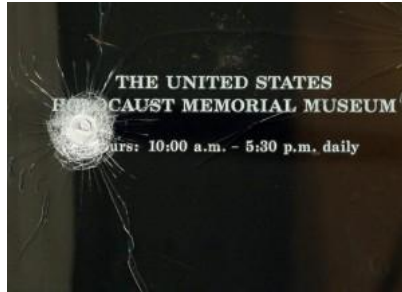
June 13 - Washington DC: "Never Again" to Hate - Freedom Plaza

Responsible for Equality And Liberty (R.E.A.L.)

<http://www.realcourage.org/never-again/>

On Sunday June 13, 2010, from 2 to 4 PM, Responsible for Equality And Liberty (R.E.A.L.) invites Washingtonians to remember the attack by white supremacist and Holocaust denier James Von Brunn on the U.S. Holocaust Memorial Museum on June 10, 2009.

We will meet at the Freedom Plaza in Washington DC, near where Dr. Martin Luther King, Jr. worked on his speech "I Have a Dream," and will stand united in our diverse religions, ethnicity, and races. We will stand united for equality. We will also say "Never Again" to hate.



We will remember black security guard Stephen Tyrone Johns who was shot to death on June 10, 2009 while on duty defending a museum that stands in remembrance to the Holocaust. We vow that his death will not be in vain, but that such sacrifices will remind us of the need to be ever-vigilant and defiant against the forces of hate that seek to spread in Washington DC and throughout America.

As those who promote hate seek to create ever-increasing numbers of hate groups in America, our message to them is that America will never retreat on hate. But we don't answer hate with hate. Instead of an upraised fist, we offer outstretched hands and hearts to those who do hate, to urge them to release the burden of hate from their hearts, and join us in defending the universal human rights and dignity of all people.

We urge all - Choose Love, Not Hate. Love Wins.

Event Logistics:

- Date: Sunday, June 13, 2010
- Time: 2 to 4 PM Eastern Daylight Savings Time
- Location: Freedom Plaza, Washington DC, 20004 - on Pennsylvania Avenue NW between 13th and 14th Streets NW
- The Freedom Plaza in Washington DC is named in honor of Martin Luther King, Jr., who worked on his "I Have a Dream" speech in the nearby Willard Hotel.
- Freedom Plaza is an open air plaza which is in front of The National Theater, whose address is 1321 Pennsylvania Avenue, NW, Washington, DC 20004
- Contact: Jeffrey Imm, info@realcourage.org, 301-613-8789, website: www.RealCourage.org

Washington DC Metro Subway Stop: Metro Center (Central Station – for Red, Blue, Orange Lines)

Walking Directions - Metro Center Metro Station to Pennsylvania Ave NW & 14th St NW:

1. Exit station through 13TH ST NW & G ST NW entrance.
2. Walk approx. 1 block S on 13th St NW.
3. Turn right on Pennsylvania Ave NW.
4. Walk approx. 1 block W on Pennsylvania Ave NW.

-- **Parking lots:** the nearby National Theater reports the following parking lot areas include:

- PMI: 1220 E Street, NW - Enter on E Street between 12th and 13th Streets; 424 11th Street, NW; 1325 G Street, NW - Enter on G Street between 13th and 14th Streets
- QUICK PARK: 1301 Pennsylvania Avenue, NW - Enter on 13th Street between E and F Streets